

RQR RÉSEAU A

Hauts & Ile-de-France, Sud

(RÉFÉRENTS QUALITÉ - RISQUES)

Mise à jour : Août 2024

 Réseau SINOPLIES

 Réseau ACPPA




 **LES BOULEAUX**

 Lourches (59)

 **Audrey JOIGNEAUX**



 **HARMONIE**

 Le Quesnoy (59)

 **Hélène CHAVATTE**



 **PÉAN**

 Paris 13^{ème} (75)

 **Badra HAMADI**



 **LE MENHIR**

 Cergy (95)

 **Sandra Taborda**



 **LOUISE WEISS**

 Noeux-les-Mines (62)

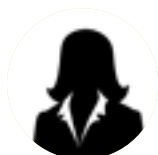
 **Anne-Lise DEBRUYNE**



 **LE SOURIRE**

 Carrière sous Poissy (78)

 **Yabavi Alihoue**



 **L'ORÉE DU BOIS**

 Bois le Roi (77)

 **Isabelle BELZACKI**



 **GUYNEMER**

 Wimereux (62)

 **Elodie Cordier**



 **LA TABLE RONDE**

 Provins (77)

 **Séverine JEUNEHOMME**



 **LA CHARITÉ**

 Lavault-Sainte-Anne (03)



 **YVONNE DE GAULLE**

 Franconville (95)

 **Meryem MANSOURI**



 **LE ROCHER**

 Gray (70)

 **Nathalie VEAUX**






 **MAURICE VILLATTE**

 Coulanges-la-Vineuse (89)



 **Siège Social** : 7 chemin du Gareizin - 69340 FRANCHEVILLE

 **Tél** : 04 72 16 30 70  **Fax** : 04 78 59 22 80  www.groupe-acppa.fr

RQR RÉSEAU B

Lyon Métropole

(RÉFÉRENTS QUALITÉ - RISQUES)

Mise à jour : Août 2024

 Réseau SINOPLIES

 Réseau ACPPA



 **LES AGAPANTHES**

 Vaulx-en-Velin (69)

 **Patience SAKANWIN**



 **LA CHRISTINIÈRE**

 Taluyers (69)



 **LES CRISTALLINES**

 Lyon 3^{ème} (69)

 **Caroline GILLES**



 **LES ALIZÉS**

 Saint-Priest (69)



 **CASTELLANE**

 Rillieux-la-Pape (69)

 **Jeanne PRILLARD**



 **LE GAREIZIN**

 Francheville (69)

 **Gaëlle FERRIER**



 **LES ALTHÉAS**

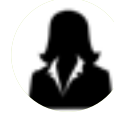
 Vaulx-en-Velin (69)



 **CONSTANT**

 Lyon 3^{ème} (69)

 **Marion VANSOEN**



 **MADELEINE CAILLE**

 Lyon 8^{ème} (69)

 **Fatia BUCHE**



 **LES AMANDINES**

 Lyon 5^{ème} (69)

 **Awatef LAVALLE**

 **Fiona Gorb**

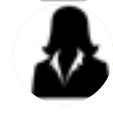


 **LA COLLINE DE LA SOIE**

 Lyon 4^{ème} (69)

 **Sylvie JOMARD**

 **Elise LEFEUVRE**

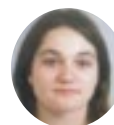


 **LA VÉRANDINE**

 Lyon 8^{ème} (69)

 **Guillaume FRANCOIS DIT LEBERT**

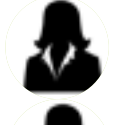
 **Alexandra ROUCHOUZE**



 **BLANQUI**

 Villeurbanne (69)

 **Emilie BESNIER**

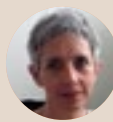
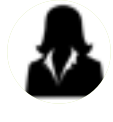


 **LES VOLUBILIS**

 Décines (69)

 **Julia MORETEAU**

 **Cécile BLANC**



 **RÉSIDOM**

 Lyon 9^{ème} (69)

 **Cécile VEY**






 **PÔLE FORMATION SANTÉ**

 Lyon 9^{ème} (69)

 **Delphine CONDAMIN**

 **Siège Social** : 7 chemin du Gareizin - 69340 FRANCHEVILLE

 **Tél** : 04 72 16 30 70  **Fax** : 04 78 59 22 80  www.groupe-acppa.fr

RQR RÉSEAU C

AuRA & Bourgogne-F.C

(RÉFÉRENTS QUALITÉ - RISQUES)

Mise à jour : Août 2024

 Réseau SINOPLIES

 Réseau ACPPA



 L'ACCUEIL

 St-Bonnet-de-Mûre (69)

 Léa DEMOULE




 LES SOLEILLADES

 Genas (69)

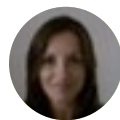
 Jocelyne SAMUEL



 LA CHACUNIÈRE


 Roanne (42)

 Eva REPIQUET



 LES MAGNOLIAS

 Villefranche (69)

 Flora PASTOR



 MA CALADE

 Villefranche (69)





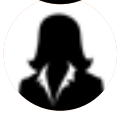
 LA BOISSIÈRE

 FOYER BOTICELLI

 LES MESANGES

 Saint-Igny-de-Vers (69)


 Véronique Jolivet



 Véronique Durantet



 LES MARRONNIERS

 Jassans-Riottier (01)

 Karine Lacroix



 LA ROSE DES VENTS

 Jassans-Riottier (01)

 Mélanie Brochard




 JEAN BOREL

 Le Bois d'Oingt (69)

 Priscilla Wallaert




 LE PARY

 Roanne (42)

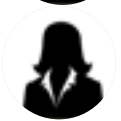
 Eva REPIQUET



 LA MAISON DU LAC

 Saint-Egrève (38)

 Jennifer DOGUET



 Mélanie PEPIN

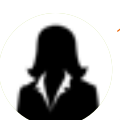


 LE KANOÀ

 LES TUILES VERTES

 Perpignan (66)

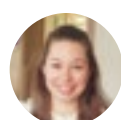
 Sonia AURIOL



 L'OUSTALET

 Montagnac (34)

 Adeline BRITO



 MONTAIGU

 Villefranche (69)

 Marion REY



 LE GRAND PRÉ

 Senas (13)

 Delphine FAGNOU



 CLAUDE MONET

 Villefranche (69)

 Marion REY



 LES COURALIES

 Montpellier (34)

 Pauline AGNERAY




 LA MAISON DES ANCIENS

 Echirolles (38)

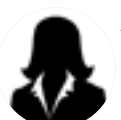




 LA CHÊNERAIE


 Bassillac (24)

 Manon SEGUI




 RÉSIDENCE COURAL

 Montpellier (34)

 Roseline LAFON LOGEREAU




 LE VERNON

 Vaulnaveys-le-Haut (38)

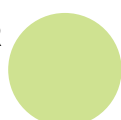




 RÉSIDENCE DE LA TOUR

 Eyzin-Pinet (38)








 RÉMY FRANÇOIS

 Ampuis (69)



 Siège Social : 7 chemin du Gareizin - 69340 FRANCHEVILLE

 Tél : 04 72 16 30 70  Fax : 04 78 59 22 80  www.groupe-acppa.fr